

# 4360/60 V DS MODEL

## RUBBER + STEEL ACOUSTIC HANGER WITH DIRECT FASTENING TO METAL CHANNEL TC60

The **4360/60 V DS** model is a **RUBBER + STEEL** hanger with locking device (**DS**) devised to provide quality to any given acoustic system and to eradicate sound frequencies and vibrations. This hanger get fastened into the channel easily and quickly thanks to our exclusive design. **We are the only ones who can manufacture it.**

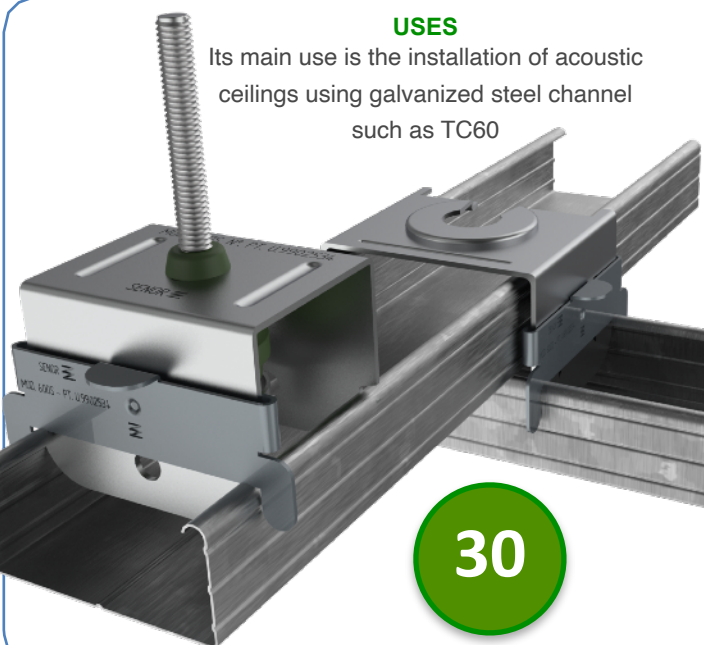
The **4360/60 V DS** model is made of a high quality polymer (rubber) which provides improvements in the **vibro-acoustic** field.

The polymer of this hanger is **KRAIBURG-TPE** tested according to standard **UNE-EN ISO 10846-1:2009** (UNE: Spanish Association for Standardization). It reaches a resonance frequency of **7-15 Hz**.

*\*This product has been registered in the Spanish Patents and Trademarks Office.*

**USES**

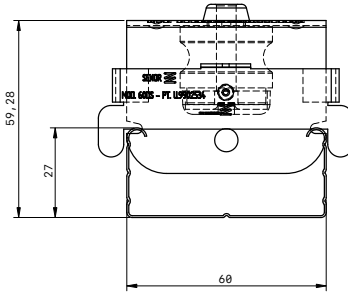
Its main use is the installation of acoustic ceilings using galvanized steel channel such as TC60

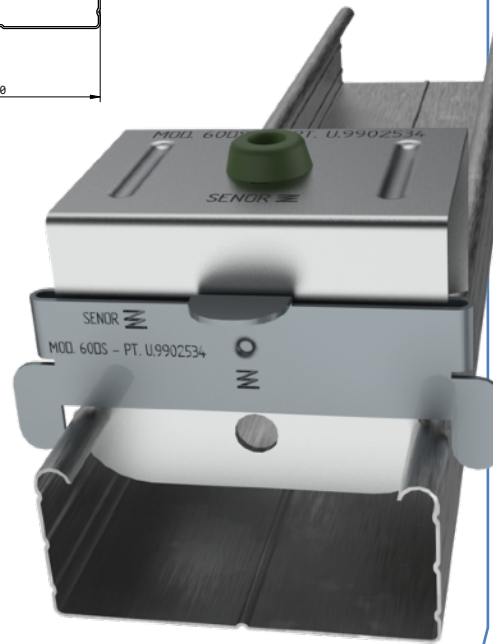


30

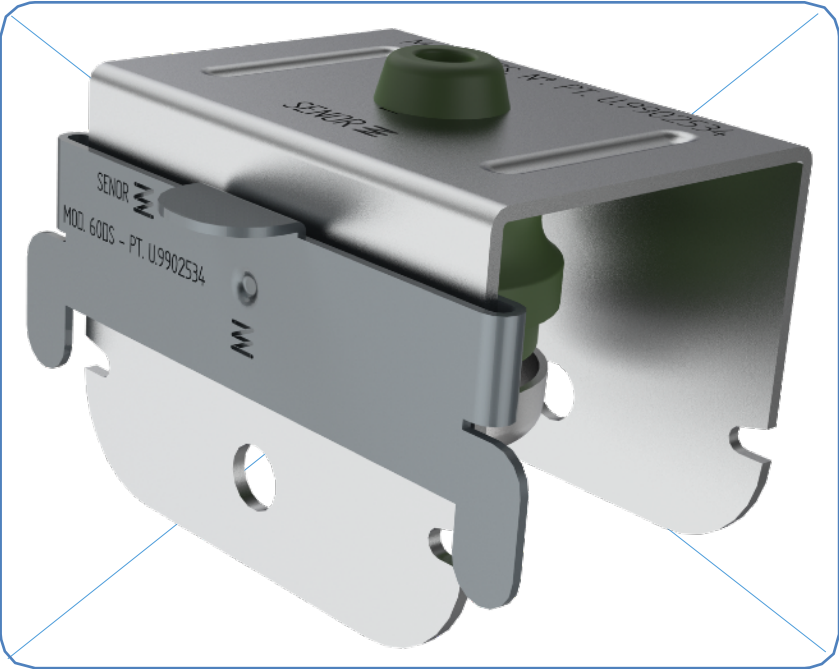
**METAL CHANNEL**



Galvanized steel ceiling channel  
60 millimeters





(DS)



REF.	COLOUR	METRIC MIN-MAX	CHANNEL (mm)	LOAD (Kg) MIN-MAX	PACKING
SE-4360/60 VDS/24		6 - 8	60	8 - 30	24
SE-4360/60 VDS/80		6 - 8	60	8 - 30	80



SEÑOR Aisladores Acústicos

# 4360/60 V DS MODEL

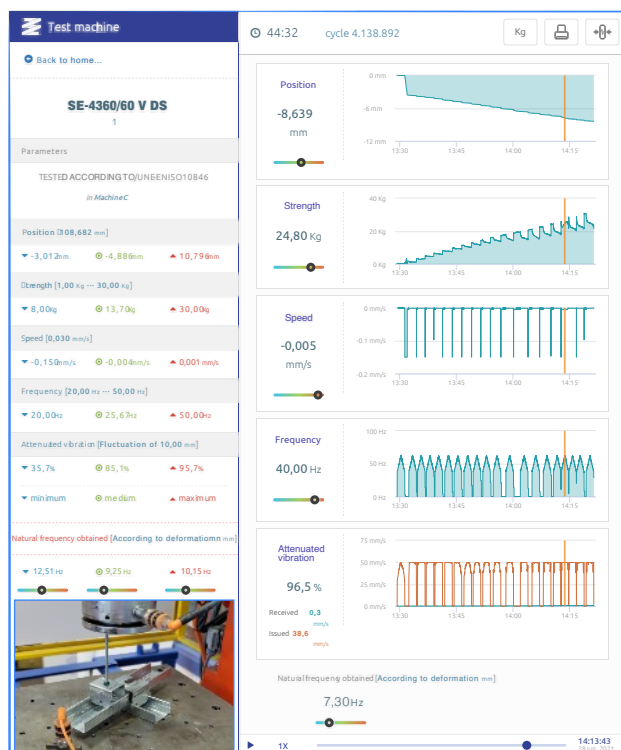


Chart 1

Laboratory test  
UNE-EN ISO 10846-1:2009

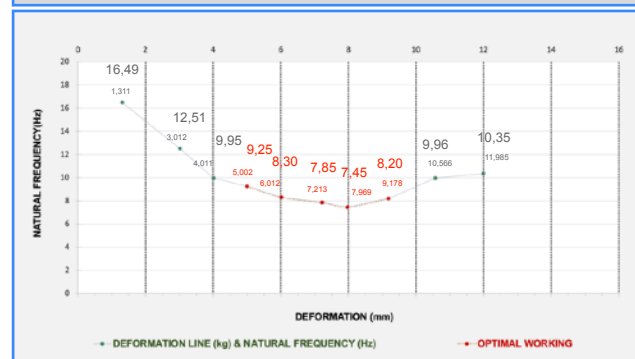
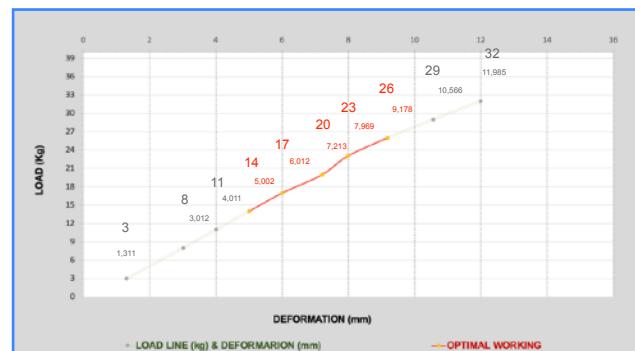
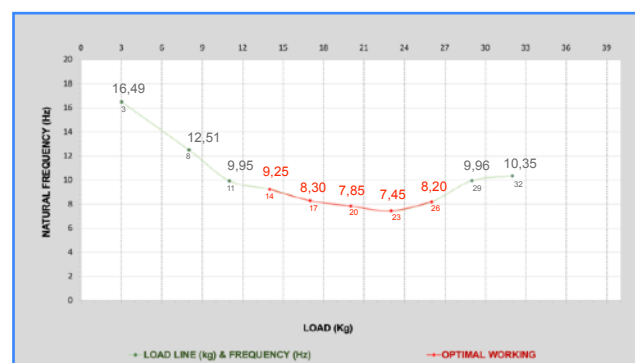


Chart 2

LOAD (Kg)	DEFORMATION (mm)	RESONANCE FREQUENCY (Hz)	SWEEP (Hz)		SOUNDPROOFING LEVEL (%)	
11	4,011	9,95	25	50	81,18	95,88
14	5,002	9,25	25	50	84,14	96,46
17	6,012	8,30	25	50	87,61	97,17
20	7,213	7,85	25	50	89,06	97,47
23	7,969	7,45	25	50	90,25	97,73
26	9,178	8,20	25	50	87,94	97,24

Chart 3



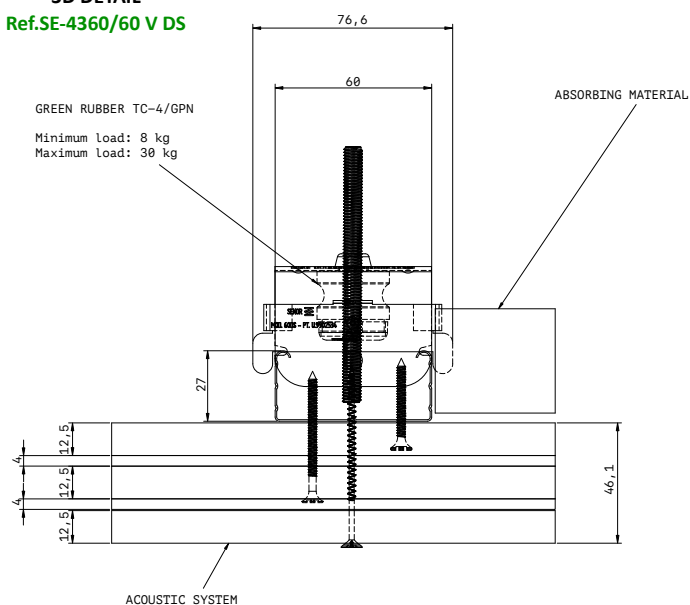


\*SENOR Aisladores Acústicos

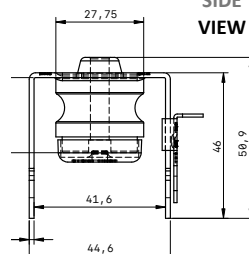
# 4360/60 V DS MODEL

## 3D DETAIL

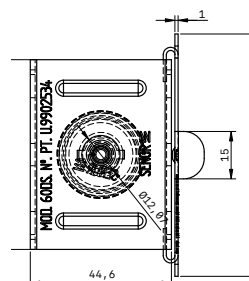
Ref.SE-4360/60 V DS



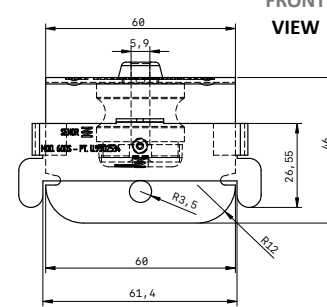
## SIDE VIEW



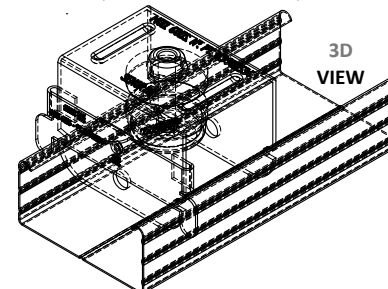
## PLANT VIEW



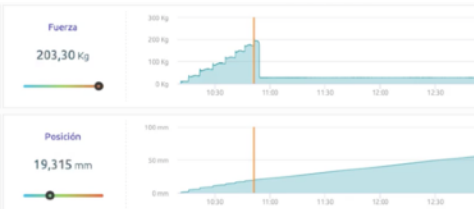
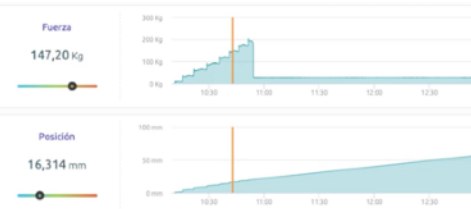
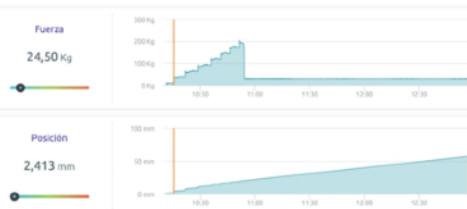
## FRONT VIEW



## 3D VIEW



SCALE 1:1



Applied load: 24,50 Kg

Applied load: 147,20 Kg

Applied load: 203,30 Kg

# 4360/60 V DS MODEL



SEÑOR Aisladores Acústicos

## Test date

SEÑOR 18<sup>th</sup> December 2020

## Failure mode

This acoustic hanger exceeds the elastic limit of ceiling channel by reaching **203,30 Kg**. In this case, the strength line goes down and reaches **27,80 Kg**.

The burst test is concluded.

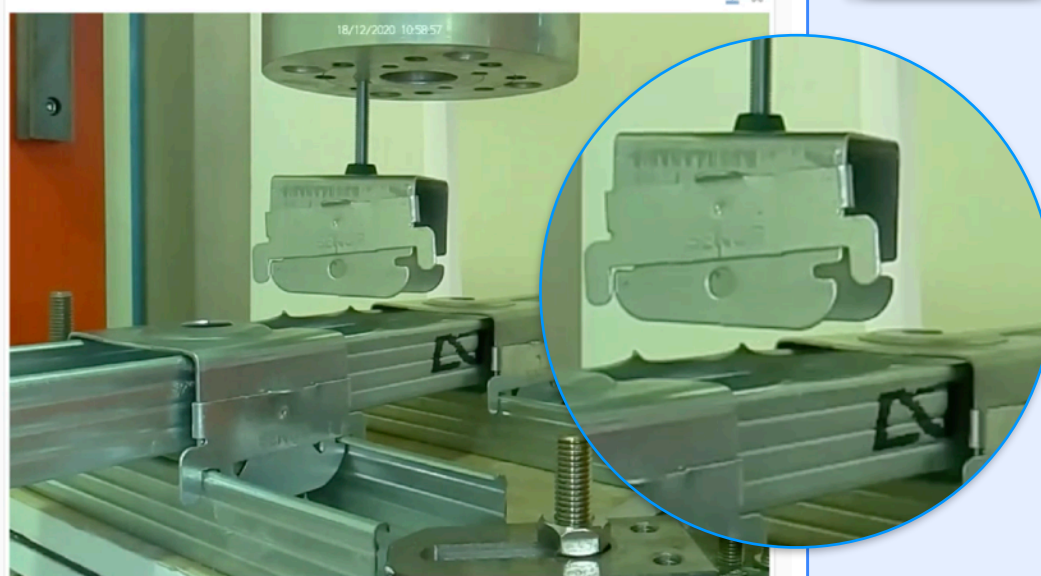
## Conclusion

This acoustic hanger is designed to bear loads between **8-30 kg** (maximum load).

It strictly complies with standard **UNE-EN 13964:2016/A1**.  
Suspended ceiling. Requirements and test methods. (UNE: Spanish Association for Standardization).



SCAN ME



## INSTALLATION

